

BZ Long ACTUAL 11-2016



Oil Per Board: 40 uL Oil Pattern Distance: 45 Feet Volume Oil Total: 21.6 mL Total Boards Crossed: 540 Boards

Forward Oil Total: 12.6 mL Reverse Oil Total: 9 mL
 315 Boards 225 Boards

Notes

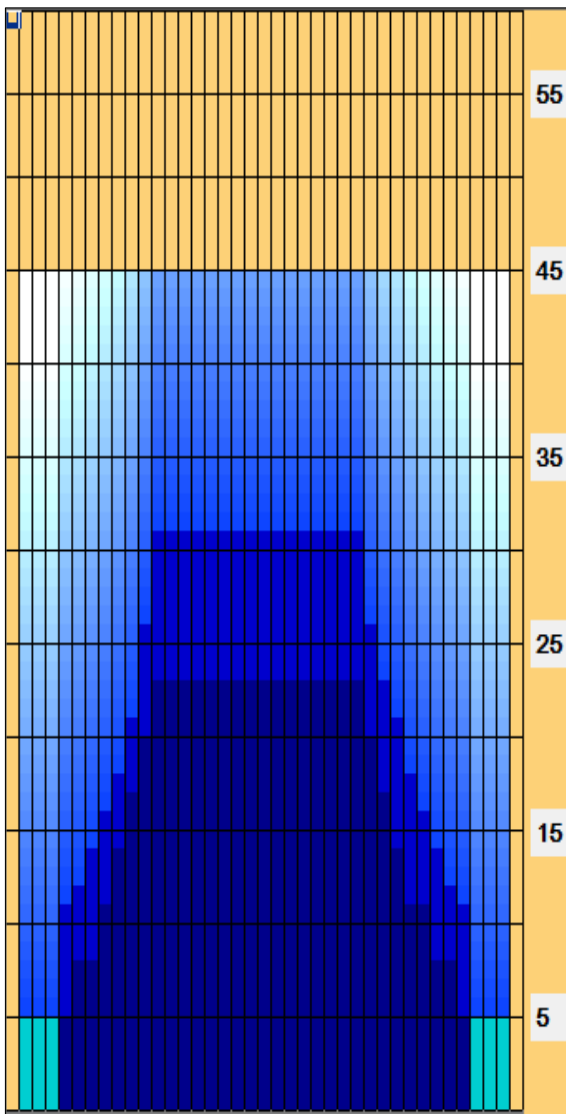
	Start	Stop	Loads	Speed	Crossed	Start	End	Feet	T.Oil
1	2L	2R	5	10	185	0.0	5.6	5.6	7400
2	6L	6R	1	18	29	5.6	8.1	2.5	1160
3	8L	8R	1	22	25	8.1	11.2	3.1	1000
4	9L	10R	1	22	22	11.2	14.3	3.1	880
5	10L	11R	1	22	20	14.3	17.4	3.1	800
6	11L	12R	1	22	18	17.4	20.5	3.1	720
7	12L	13R	1	22	16	20.5	23.6	3.1	640
8	2L	2R	0	30	0	23.6	45.0	21.4	0

	Start	Stop	Loads	Speed	Crossed	Start	End	Feet	T.Oil
1	2L	2R	0	26	0	45.0	31.0	-14.0	0
2	12L	13R	2	18	32	31.0	25.9	-5.1	1280
3	11L	12R	1	18	18	25.9	23.4	-2.5	720
4	11L	11R	1	18	19	23.4	20.9	-2.5	760
5	10L	10R	1	18	21	20.9	18.4	-2.5	840
6	9L	9R	1	18	23	18.4	15.9	-2.5	920
7	8L	8R	1	14	25	15.9	14.0	-1.9	1000
8	7L	7R	1	14	27	14.0	12.1	-1.9	1080
9	6L	6R	1	10	29	12.1	10.7	-1.4	1160
10	5L	5R	1	10	31	10.7	9.3	-1.4	1240
11	2L	2R	0	10	0	9.3	0.0	-9.3	0

Conditioner:
Type In or Select One

TransferType:
Type In or Select One

- Forward
- Reverse
- Combined
- Buff



Arrow Zone Ratios

Item	2-5L:16L-20	6-10L:16:-20	11-15L:16L-20	16L-20:20-16R	16L-20:20-16R	20-16R:15-11R	20-16R:10-6R	20-16R:5-2R
ul Arrow	210	448	816	840	840	776	432	210
Zone Ratio	4	1.88	1.03	1	1	1.08	1.94	4

Track Zone Ratios

Item	3L-7L:18L-18R	8L-12L:18L-18R	13L-17L:18L-18R	18L-18R:17R-13R	18L-18R:12R-8R	18L-18R:7R-3R
Description	Outside Track:Middle	Middle Track:Middle	Inside Track:Middle	Middle: Inside Track	Middle:Middle Track	Middle:Outside Track
Track Zone Ratio	3.18	1.35	1	1	1.48	3.18

Forward Reverse

